

Illustration A

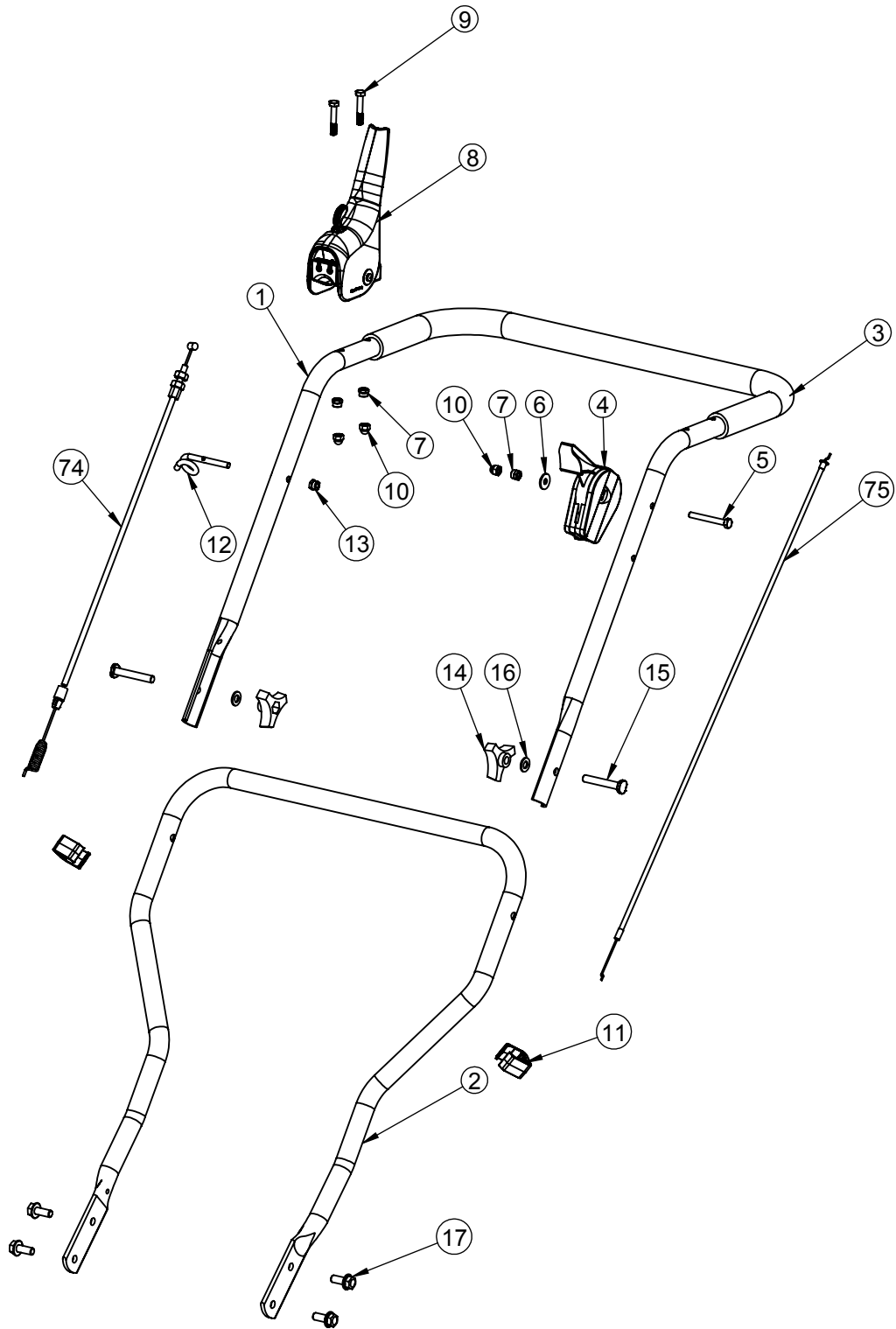


Illustration B

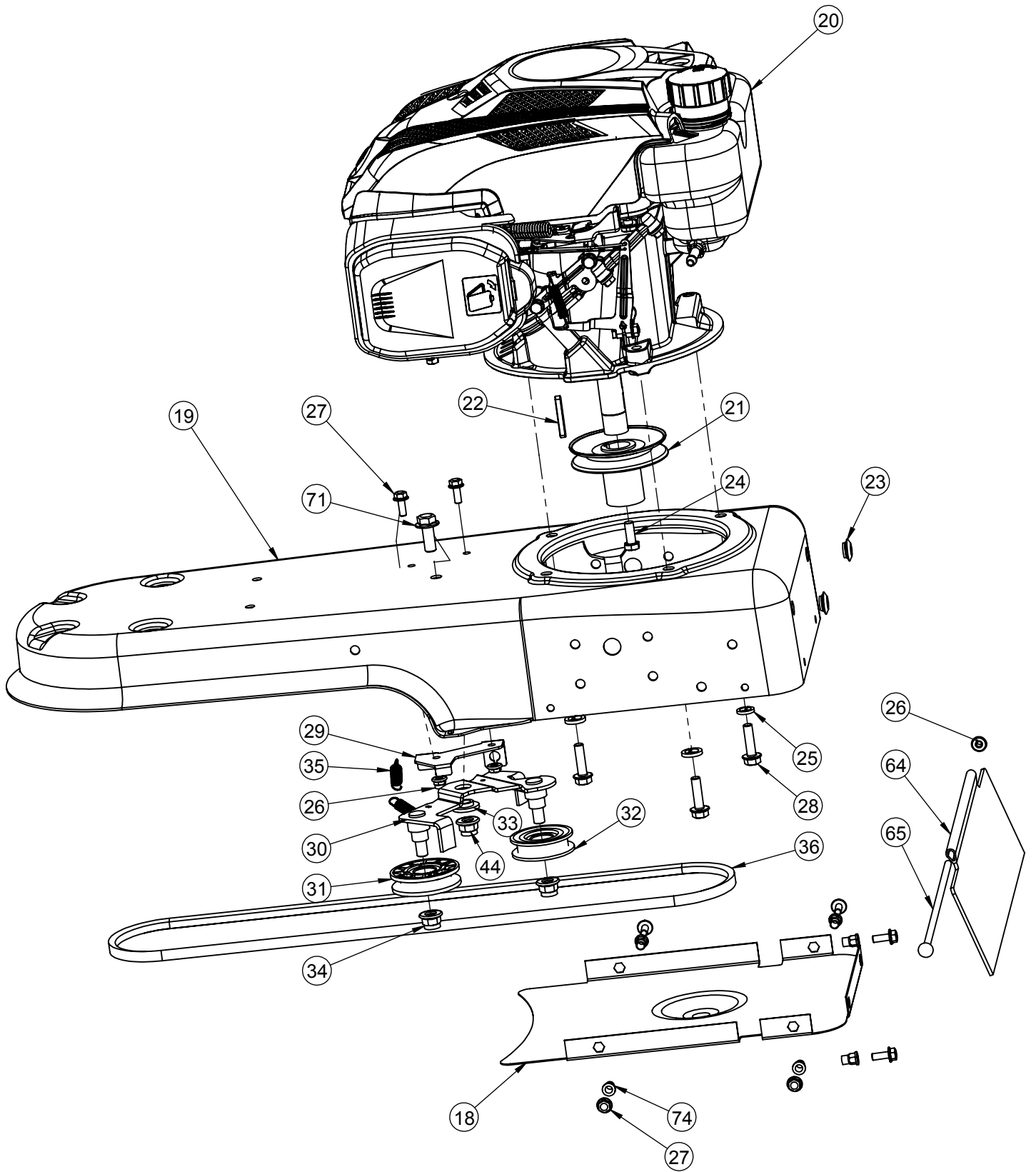


Illustration C

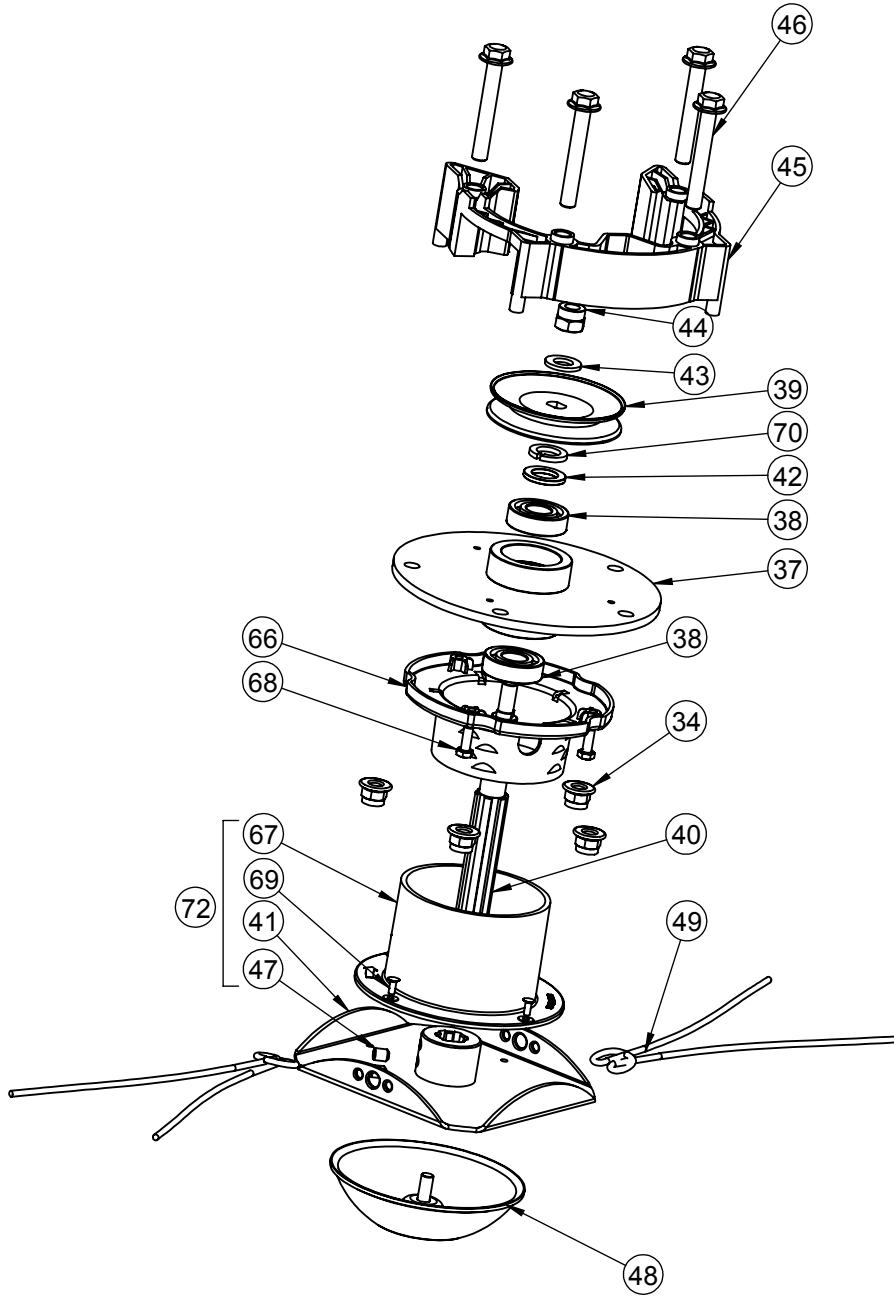


Illustration D

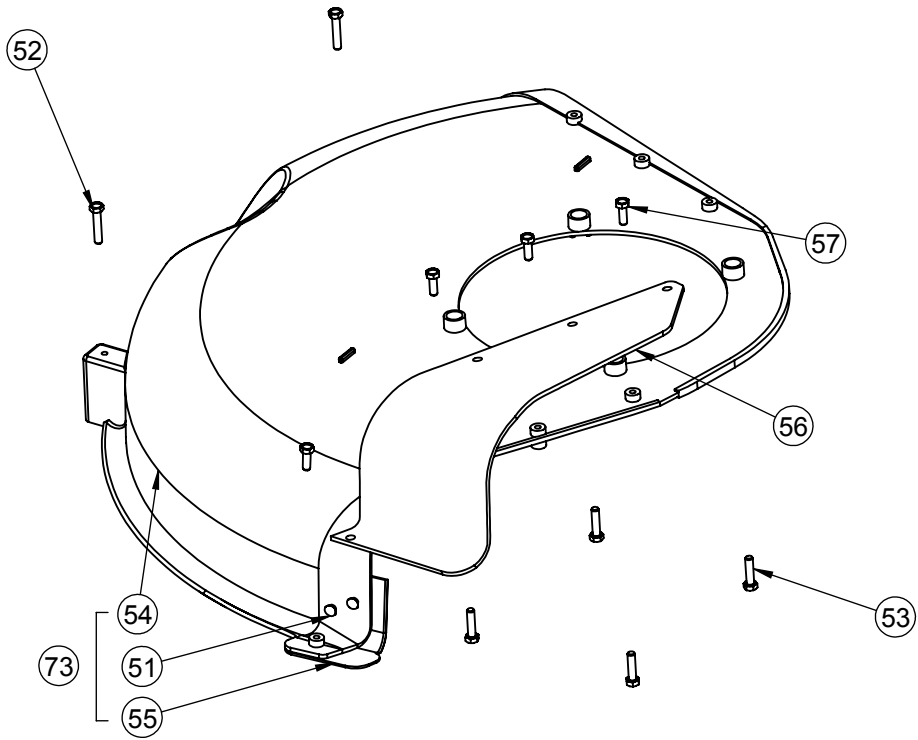
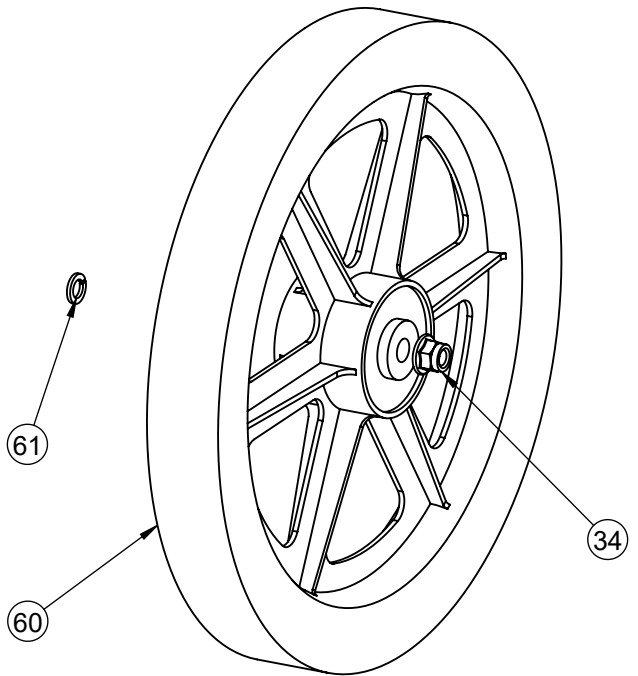
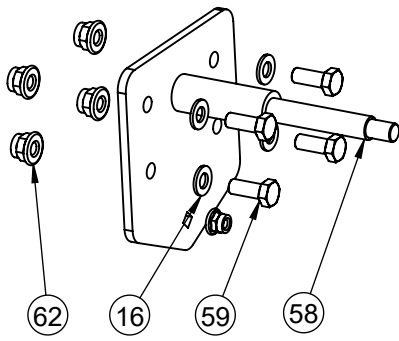


Illustration E



No.	Name	Qty.
1	Upper handle	1
2	Lower handle	1
3	Tubing foam	1
4	Red handle throttle box	1
5	Bolt GB/T 5783 M6x50	1
6	Washer GB/T 96.1 6	1
7	Nut GB/T 889.1 M6	1
8	CE clutch handle(gear pattern)	1
10	Nut cap M6	1
11	XY clamp 22	2
12	Guide rope	1
13	Nut GB/T 923 M6 HX	1
14	Quick nut black	2
15	Curve head bolt	2
16	Washer GB/T 97.1 8	13
74	Clutch cable	1
75	Throttle cable	1
17	Bolt GB/T 5789 M8x20	4
18	Lower guard	1
19	Chassis	1
20	Engine Y173V.2CK01	1
21	Engine pulley	1
22	Engine flat key FB/T 1096 4.75x30	1
23	Rubber ring	2
24	Bolt 3/8 24UNF 2Ax30	1
25	Washer GB/T 93 8	3
26	Nut GB/T 6183.1 M6	3
76	Nut GB/T 17880 M6x13.5	6
27	Bolt GB/T 5789 M6x14	8
28	Bolt GB/T 5783 M8x30	3
29	bracket for cable	1

30	Tensioner bracket	1
31	V-belt wheel	1
32	Tension wheel	1
33	Step bushing	1
71	Bolt GB/T 5789 M10x25	1
34	Nut GB/T 6183.1 M10	8
35	Spring	1
36	Kaiou Z1180Li Belt	1
64	Guard plate	1
65	bolt M6x290	1
37	Bearing housing	1
38	Bearing GB/T 276 6203 2RZ	2
39	Driven pulley	1
40	Trim shaft	1
41	Cord plate welding	1
42	Washer GB/T 848 16	1
70	Washer FB/T 955 16	4
43	Washer GB/T 97.1 10	1
44	Nut GB/T 889.1 M10	2
45	Bracket base	1
46	Bolt GB/T 5789 M10x70	4
47	Screw GB/T 80 M8x10	2
48	Support bowl welding	1
49	Cutter line	6
66	Cover for cutting head upper	1
67	Cover for cutting head lower	1
68	Tapping lock screw FB/T 6563 M5x20	3
69	Rivet GB/T 12618 4x13	4
77	Bolt GB/T 5789 M8x16	2
51	Rivet GB/T 12618 5x10	2
53	Tapping screw FB/T 5285 ST4.8x19	6
54	Shield cover	1

55	Cutting line blade	1
56	Rubber side plate	1
57	Tapping screw FB/T 5285 ST4.8x13	4
58	wheel bracket	2
59	Bolt GB/T 5783 M8x20	8
60	Wheel 1.75x14	2
61	Washer GB/T 955 12	2
62	Nut GB/T 6183.1 M8	8
72	Cutting head	1
73	Cover with blade	1